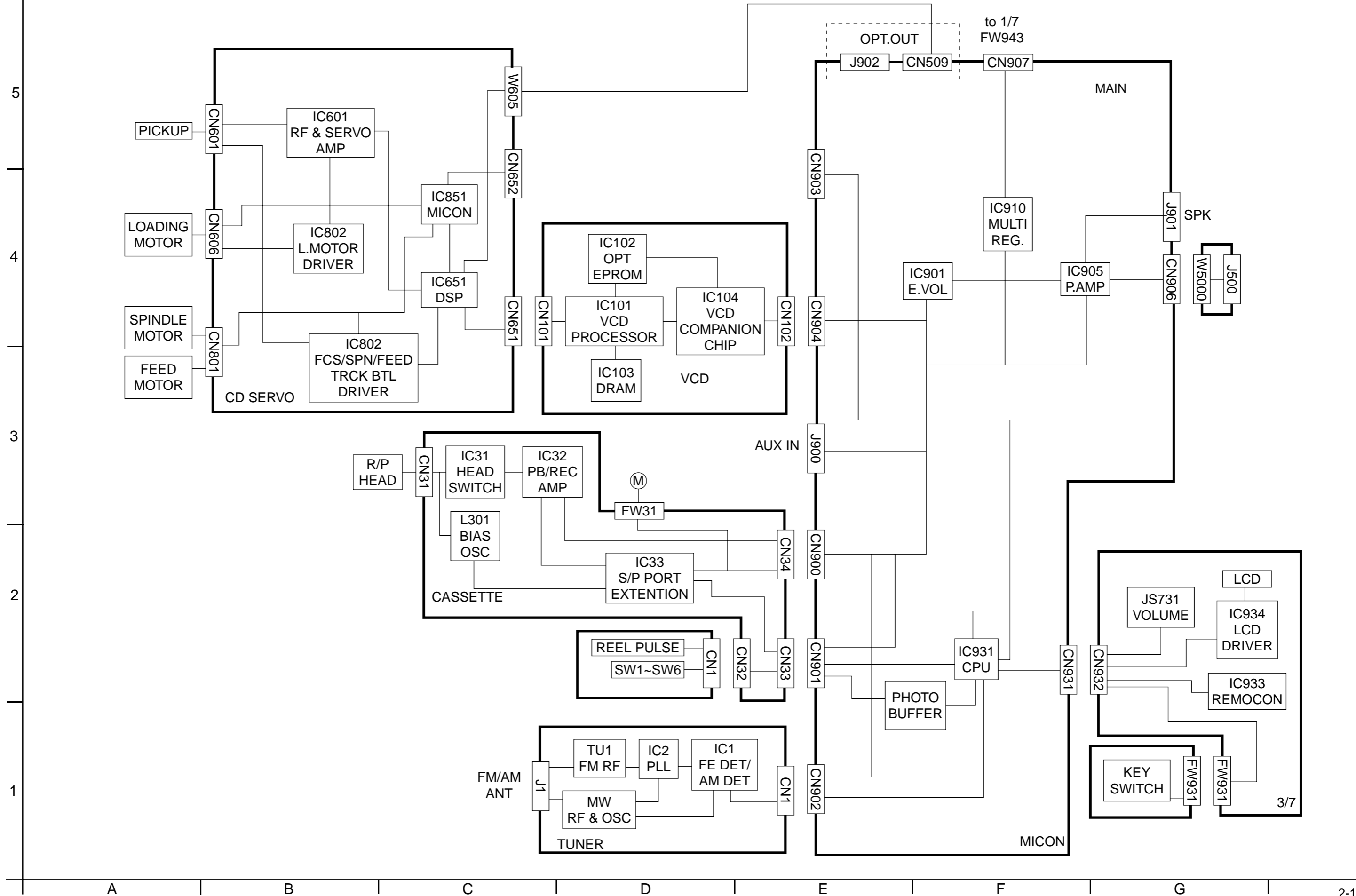
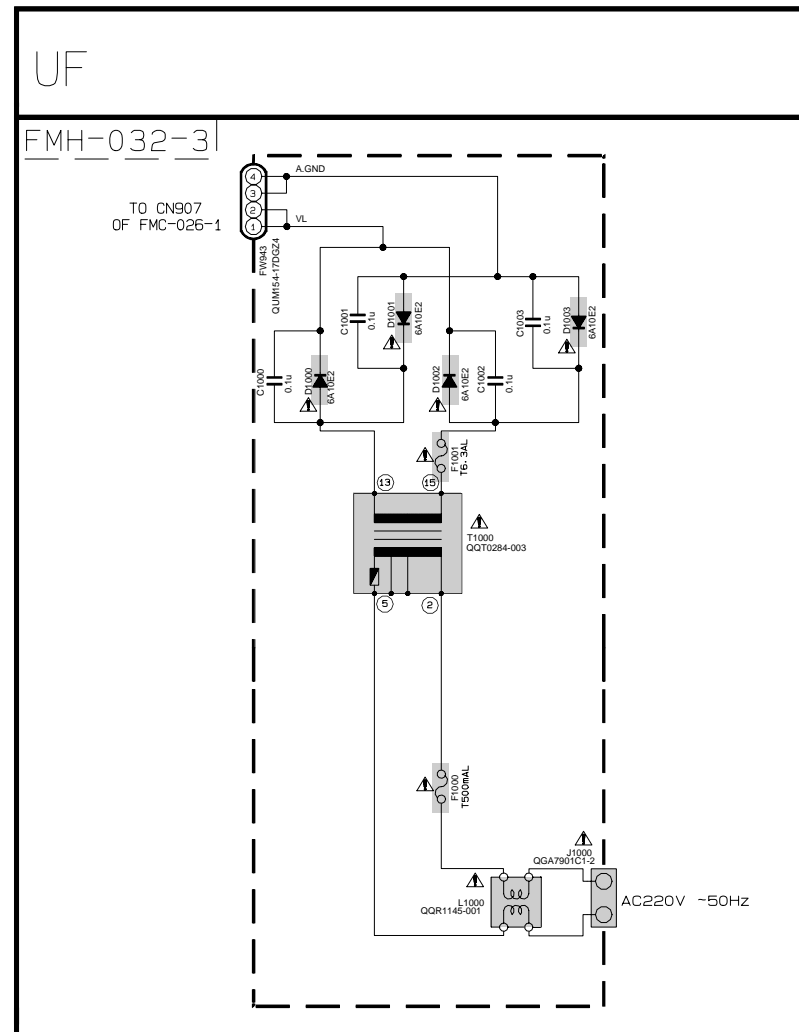
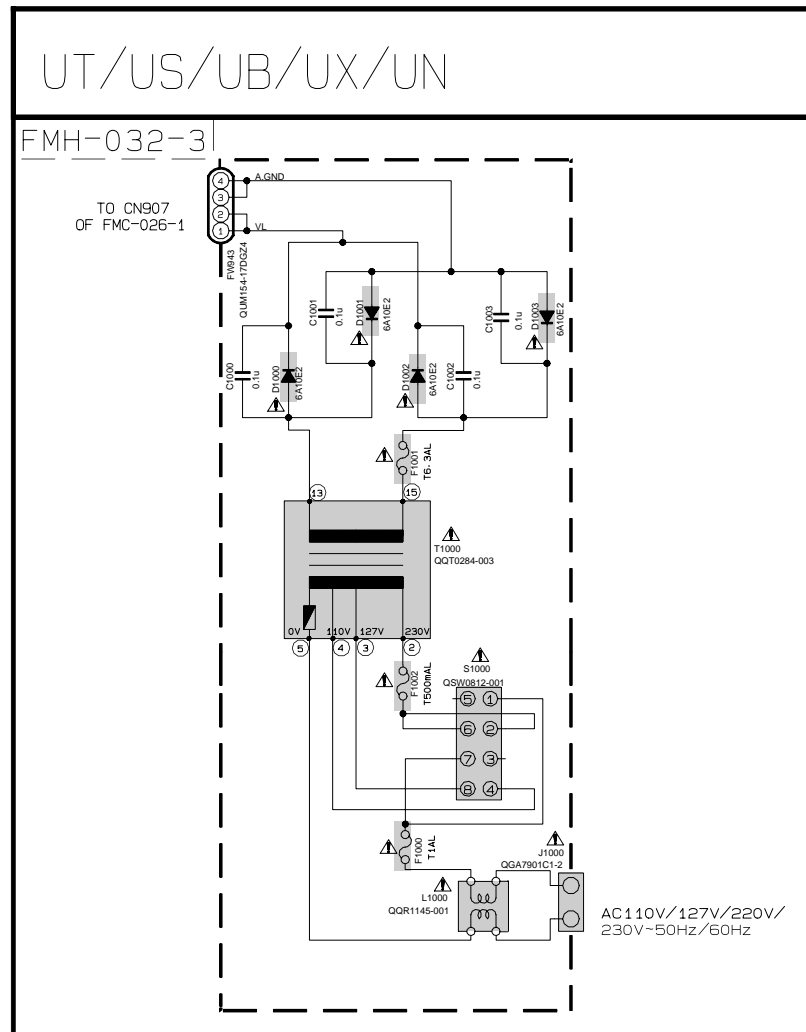


Block diagram

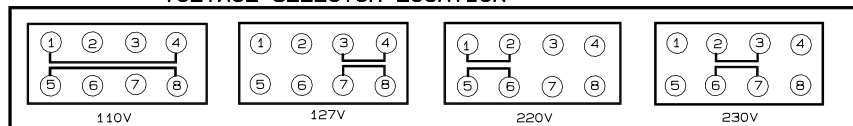


Standard schematic diagrams

■ Trans section



VOLTAGE SELECTOR LOCATION



NOTES

- VOLTAGES ARE DC-MEASURED WITH A DIGITAL VOLT METER OR OSCILLOSCOPE WITHOUT INPUT SIGNAL.
CONDITION --- CD STOP MODE
INSIDE BRACKET VALUES ARE OTHER FUNCTIONS
- UNLESS OTHERWISE SPECIFIED, RESISTORS ARE 1/8W ±5% CARBON RESISTOR.
ALL RESISTANCE VALUES ARE IN OHM(Ω).
ALL CAPACITORS ARE CERAMIC CAPACITOR OR MYLAR CAPACITOR.
ALL CAPACITANCE VALUES ARE IN nF(pF).
ALL INDUCTANCE VALUES ARE IN mH(mH).
ALL E-CAPACITORS ARE SHOWN IN THE FORM OF CAPACITANCE (±F)/RATED VOLTAGE (V).

▲ Parts are safety assurance parts.
When replacing those parts make sure to use the specified one.

EXPLANATION OF OVERALL OF SCHEMATIC

MODEL : UX-P38V

SHEET NUMBER	MODEL NUMBERS TO BE APPLIED	CIRCUITS DESCRIPTION
1/7	UX-P38V	. PRIMARY WITH MAINS TRANSFORMER
2/7	UX-P38V	. DC REGULATOR. AUDIO OUTPUT . EXTERNAL INPUT. SOURCE SELECTOR SWITCH
3/7	UX-P38V	. LCD DISPLAY/SYSTEM CONTROL/USERS KEY CONTROL
4/7	UX-P38V	. CD SERVO AND CD SYSTEM CONTROL . CD CHANGER MECHANISM CONTROL
5/7	UX-P38V	. TAPE DECK MECHANISM CONTROL . TAPE CIRCUITS SUCH AS PRE-AMP AND BIAS
6/7	UX-P38V	. TUNER RF/IF/FM MULTIPLEX
7/7	UX-P38V	. VIDEO CONTROL CIRCUIT WITH MP3 FEATURE

NOTE : MARK () IS TO SHOW DEVIATION IN VERSIONS.
DETAILS ARE EXPLAINED NEAR MARK.

VERSION CODES

- UB : HONG KONG
- UF : CHINA
- UN : INDONESIA
- UT : TAIWAN
- UX : SAUDI ARABIA
- US : SINGAPORE AND UNIVERSAL
EXCEPT ALL OF ABOVE

5

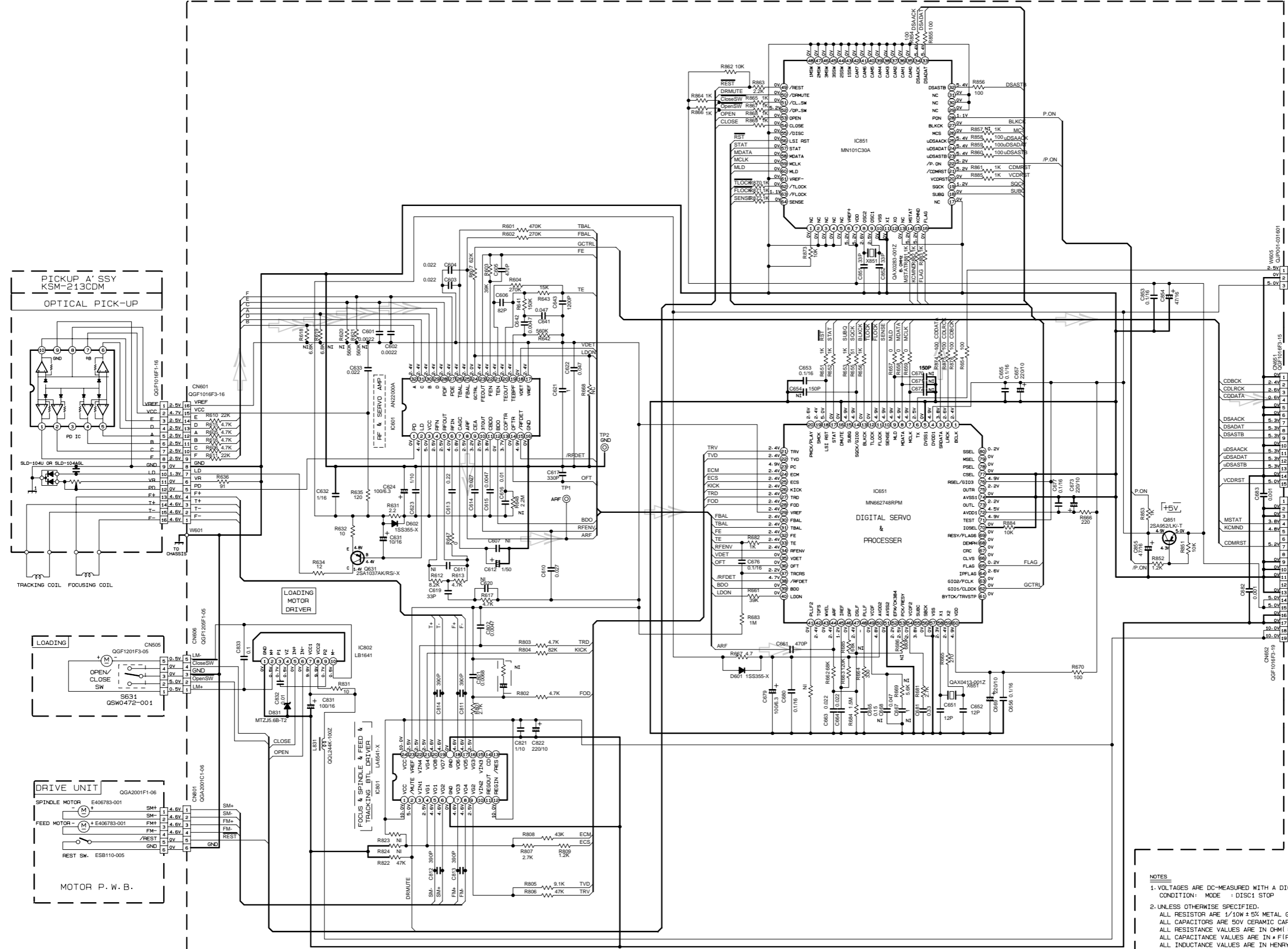
4

3

2

1

CD servo section



NOTES

1. VOLTAGES ARE DC-MEASURED WITH A DIGITAL VOLT METER
CONDITION: MODE 1 DISC1 STOP
2. ALL OTHERS OTHERWISE SPECIFIED.
ALL RESISTORS ARE 1/10W ± 5% METAL GLAZE RESISTOR.
ALL CAPACITORS ARE 50V CERAMIC CAPACITOR OR 50V NYLON CAPACITOR.
ALL RESISTANCE VALUES ARE IN OHM (Ω).
ALL CAPACITANCE VALUES ARE IN PICO (pF).
ALL INDUCTANCE VALUES ARE IN HENRY (H).
ALL E-CAPACITORS ARE SHOWN IN THE FORM OF CAPACITANCE (μF)/RATED VOLTAGE (V).

FMN-010

CD SIGNAL

TO CN905 OF FMC-026-1 (PAGE 2/7)

TO CN101 OF FMC-010BM (PAGE 7/7)

TO CN903 OF FMC-026-1 (PAGE 2/7)

5

4

3

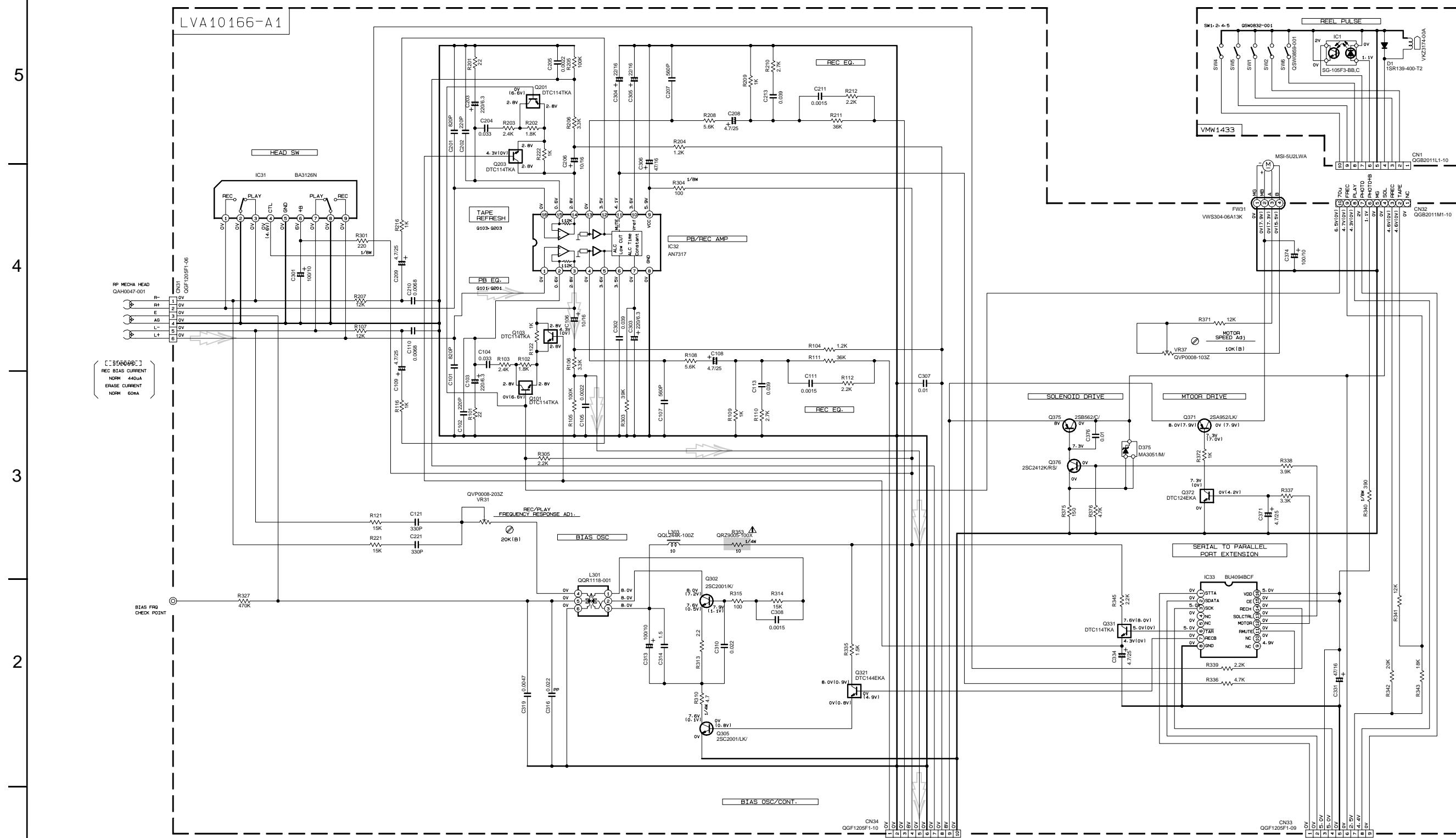
2

1

A B C D E F G

2-5

Cassette section



NOTES

1. VOLTAGES ARE DC-MEASURED WITH A DIGITAL VOLT METER OR OSCILLOSCOPE WITHOUT INPUT SIGNAL. CONDITION - MEDIA STOP MODE.

2. UNLESS OTHERWISE SPECIFIED - RESISTORS ARE 1/10W 45% METAL GLAZE RESISTOR. ALL RESISTANCE VALUES ARE IN OHM(S). ALL CAPACITORS ARE CERAMIC CAPACITOR OR MYLAR CAPACITOR. ALL CAPACITANCE VALUES ARE IN #F(P=PF). ALL INDUCTANCE VALUES ARE IN #H(M=MH). ALL E-CAPACITORS ARE SHOWN IN THE FORM OF CAPACITANCE (#)/RATED VOLTAGE (V). POLYPROPYLENE CAPACITOR

PARTS	NAME	REF. NO.
	FA144Z or DTC114TKA	Q101-Q201 Q103-Q203 Q331
	FA144M or DTC144EKA	Q301
	FA144M or DTC144EKA	Q372

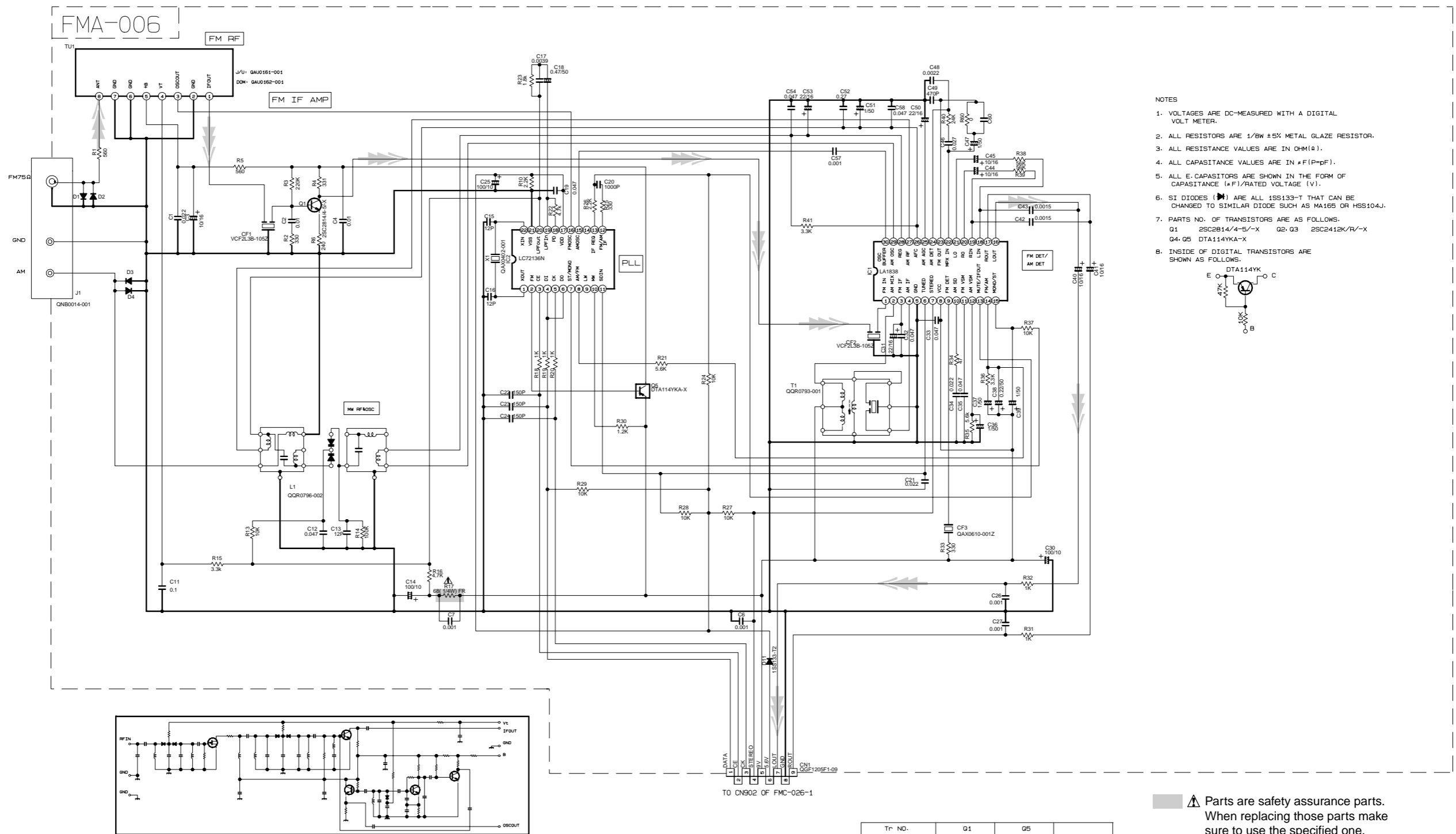
TAPE SIGNAL

Parts are safety assurance parts. When replacing those parts make sure to use the specified one.

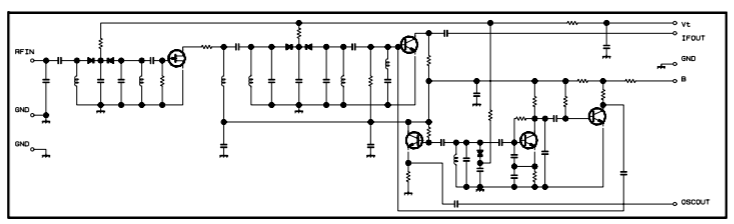
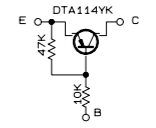
TO CN901 OF FMC-026-1

TO CN900 OF FMC-026-1

Tuner section



- NOTES
1. VOLTAGES ARE DC-MEASURED WITH A DIGITAL VOLT METER.
 2. ALL RESISTORS ARE 1/8W ±5% METAL GLAZE RESISTOR.
 3. ALL RESISTANCE VALUES ARE IN OHM(Ω).
 4. ALL CAPASITANCE VALUES ARE IN *F(PpF).
 5. ALL E-CAPASITORS ARE SHOWN IN THE FORM OF CAPASITANCE (*F)/RATED VOLTAGE (V).
 6. SI DIODES (▷) ARE ALL 1SS133-T THAT CAN BE CHANGED TO SIMILAR DIODE SUCH AS MA165 OR HSS104J.
 7. PARTS NO. OF TRANSISTORS ARE AS FOLLOWS.
Q1 2SC2B14/4-5-X Q2, Q3 2SC2412K/R/-X
Q4, Q5 DTA114YKA-X
 8. INSIDE OF DIGITAL TRANSISTORS ARE SHOWN AS FOLLOWS.



CONDITION	PIN NO.	1	2	3	4	5	6	7	8	9	10	11	12	13	14	15	16	17	18	19	20	21	22	23	24	25	26	27	28	29	30
IC1	FM NO SIGNAL	3.6	8.9	3.6	3.6	0	5.0	5.0	8.9	8.9	1.3	0.1	0	0.9	7.8	7.8	4.3	4.3	4.3	4.3	3.4	3.4	2.8	3.4	0	0	3.5	3.5	3.6	3.6	2.7
IC1	FM 60dB STEREO	3.6	8.9	3.6	3.6	0	5.0	5.0	8.9	8.9	1.3	4.3	0	0.9	7.8	7.8	4.3	4.3	4.3	4.3	3.4	3.4	2.8	3.4	0	0	3.6	3.6	3.6	3.6	2.7
IC1	AM NO SIGNAL	3.5	9.0	3.5	3.5	0	5.0	5.1	9.0	2.6	1.3	0	0	0.9	4.7	5.5	4.3	4.3	4.3	4.3	3.3	3.2	2.8	ust	0.7	0.7	3.6	3.6	3.6	3.6	2.1
IC2	FM NO SIGNAL	2.5	0	0	5.0	4.9	5.0	7.9	7.8	3.6	6.1	5.1	0	0	0	2.5	5.1	0.9	0.9	3.8	0	2.3									

Tr NO.	Q1	Q5
PIN NO.	E C B	E C B
FM 87.5MHz NO SIGNAL	0 7.1 0.85	8.9 8.8 0
AM 52kHz NO SIGNAL	0 0 0 9.0 0 0 8.9	

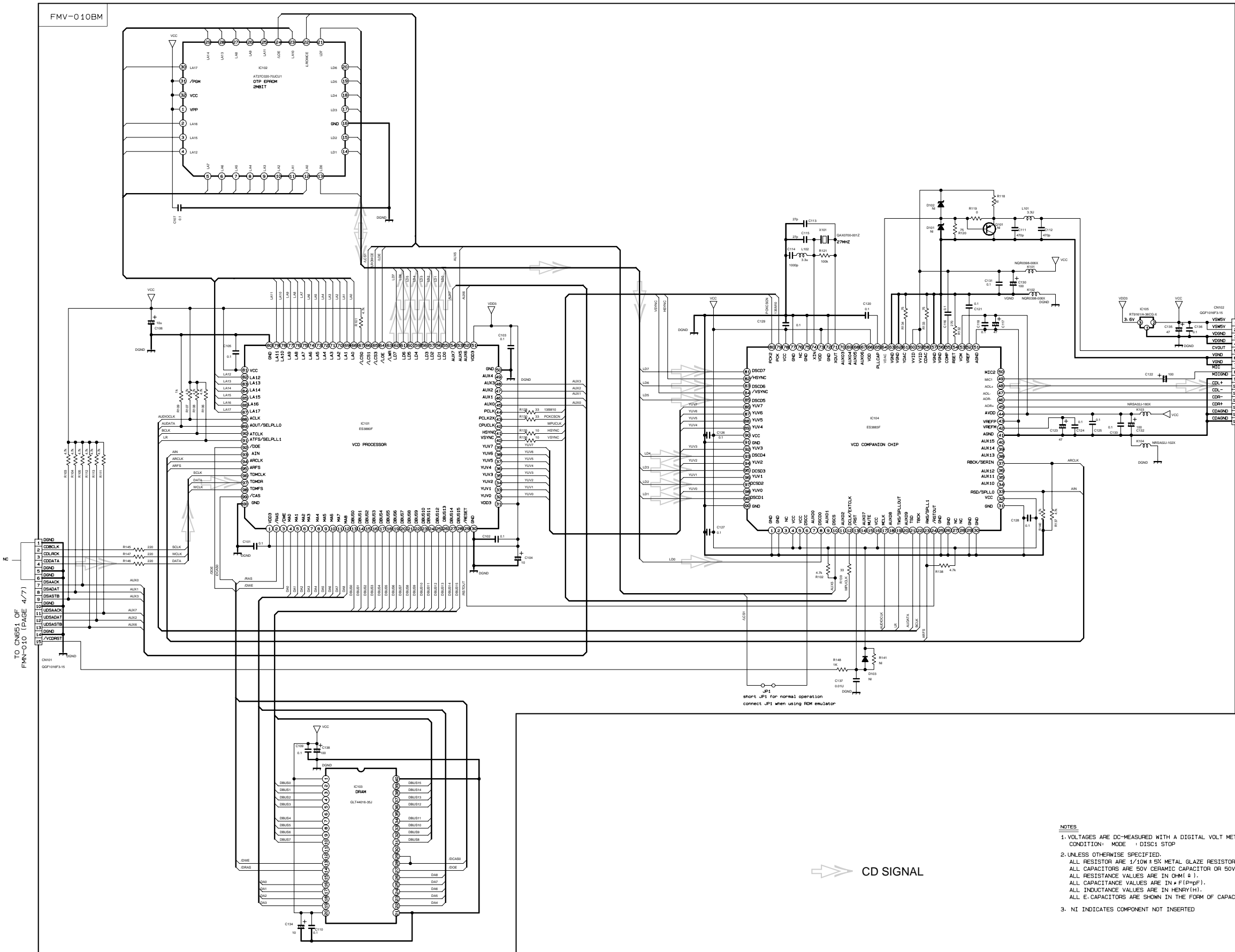
Tr NO.	Q2	Q3	Q4
PIN NO.	E C B	E C B	E C B
AM 52kHz NO SIGNAL	0 0 0 0.7 0 0 0.7 0 3.6 0.7		
AM 14kHz NO SIGNAL	0 0 0 0.3 0 0.3 0.3 3.6 3.6 3.6		

▲ Parts are safety assurance parts. When replacing those parts make sure to use the specified one.

➡ TUNER SIGNAL

5
4
3
2
1

VCD control section



TO CN604 OF FMC-026-1 (PAGE 2/7)

CD SIGNAL

- NOTES
1. VOLTAGES ARE DC-MEASURED WITH A DIGITAL VOLT METER
CONDITION: MODE = DISC1 STOP
 2. UNLESS OTHERWISE SPECIFIED:
ALL RESISTORS ARE 1/10W ± 5% METAL GLAZE RESISTOR.
ALL CAPACITORS ARE 50V CERAMIC CAPACITOR OR 50V MYLAR CAPACITOR.
ALL RESISTANCE VALUES ARE IN OHM (Ω).
ALL CAPACITANCE VALUES ARE IN PICO-FARAD (pF).
ALL INDUCTANCE VALUES ARE IN HENRY (H).
ALL E-CAPACITORS ARE SHOWN IN THE FORM OF CAPACITANCE (μF)/RATED VOLTAGE (V).
 3. NI INDICATES COMPONENT NOT INSERTED

Printed circuit boards

■ Main board

■ Tuner board

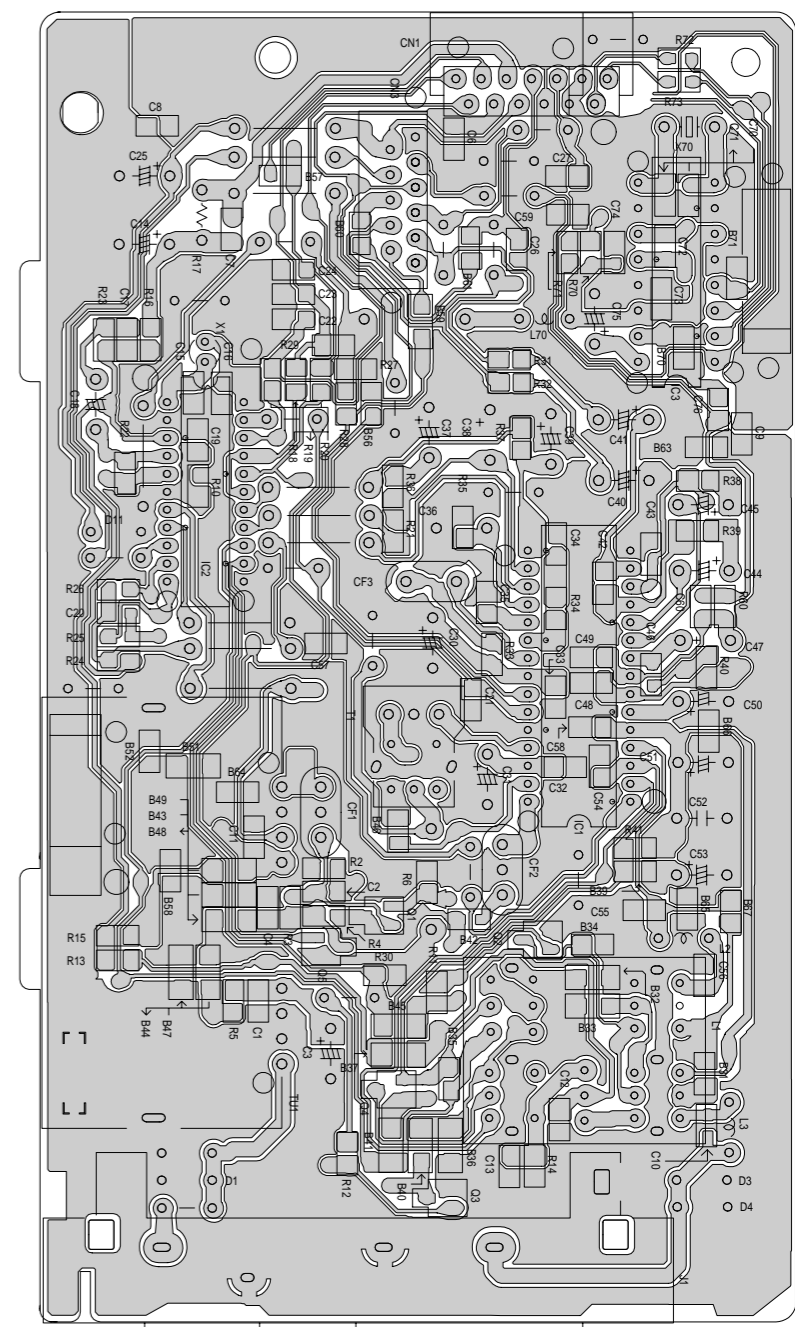
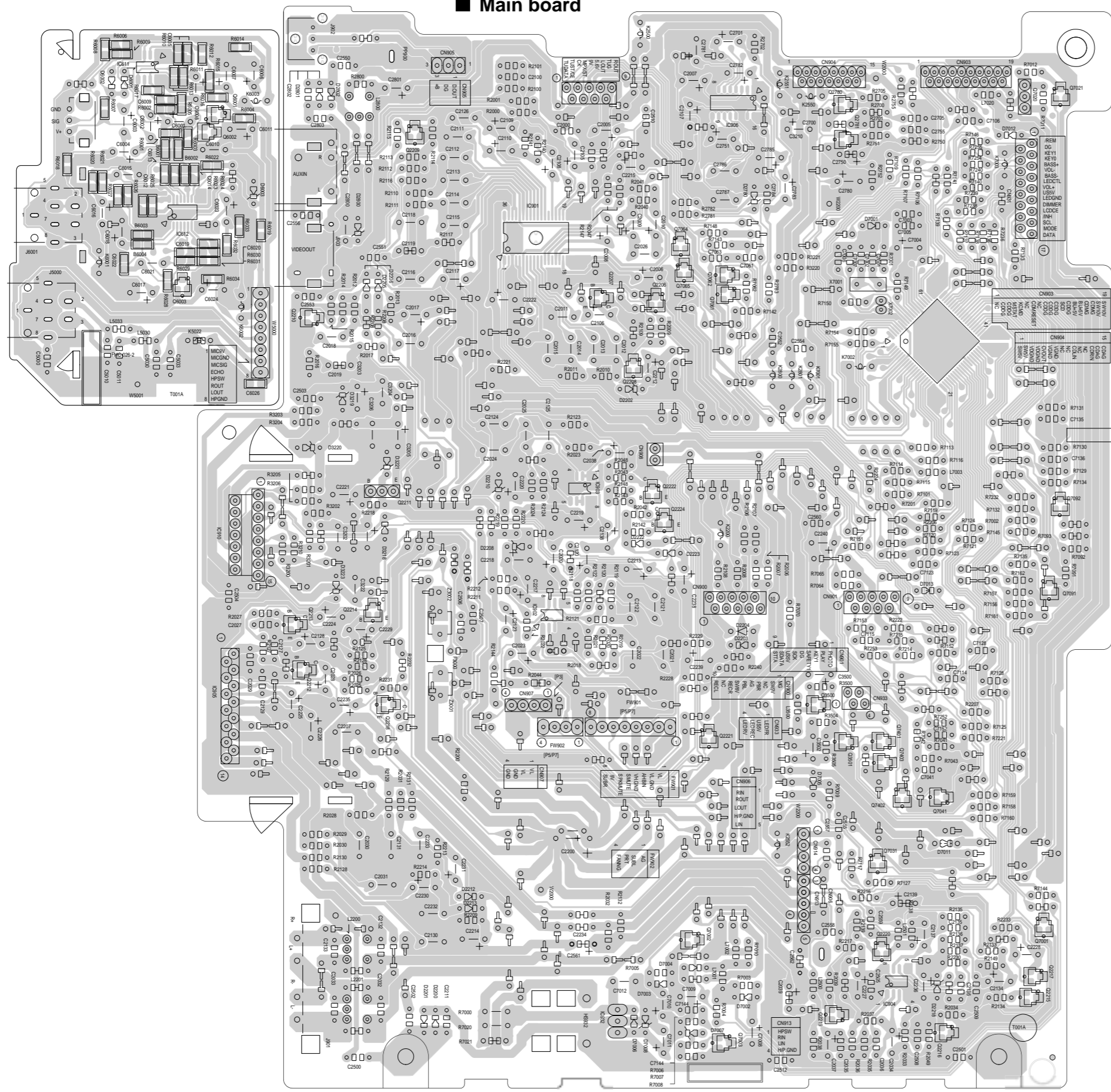
5

4

3

2

1



A

B

C

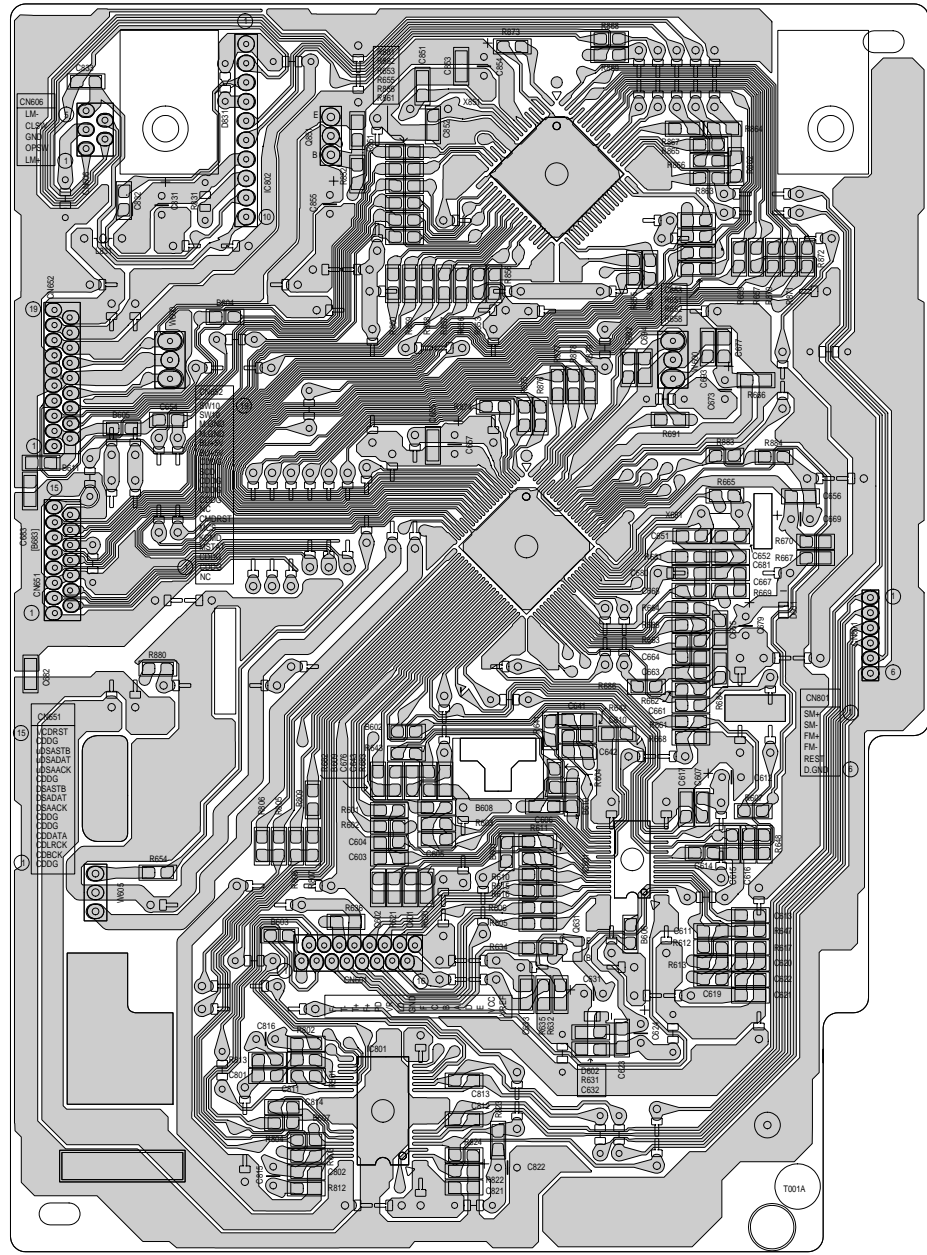
D

E

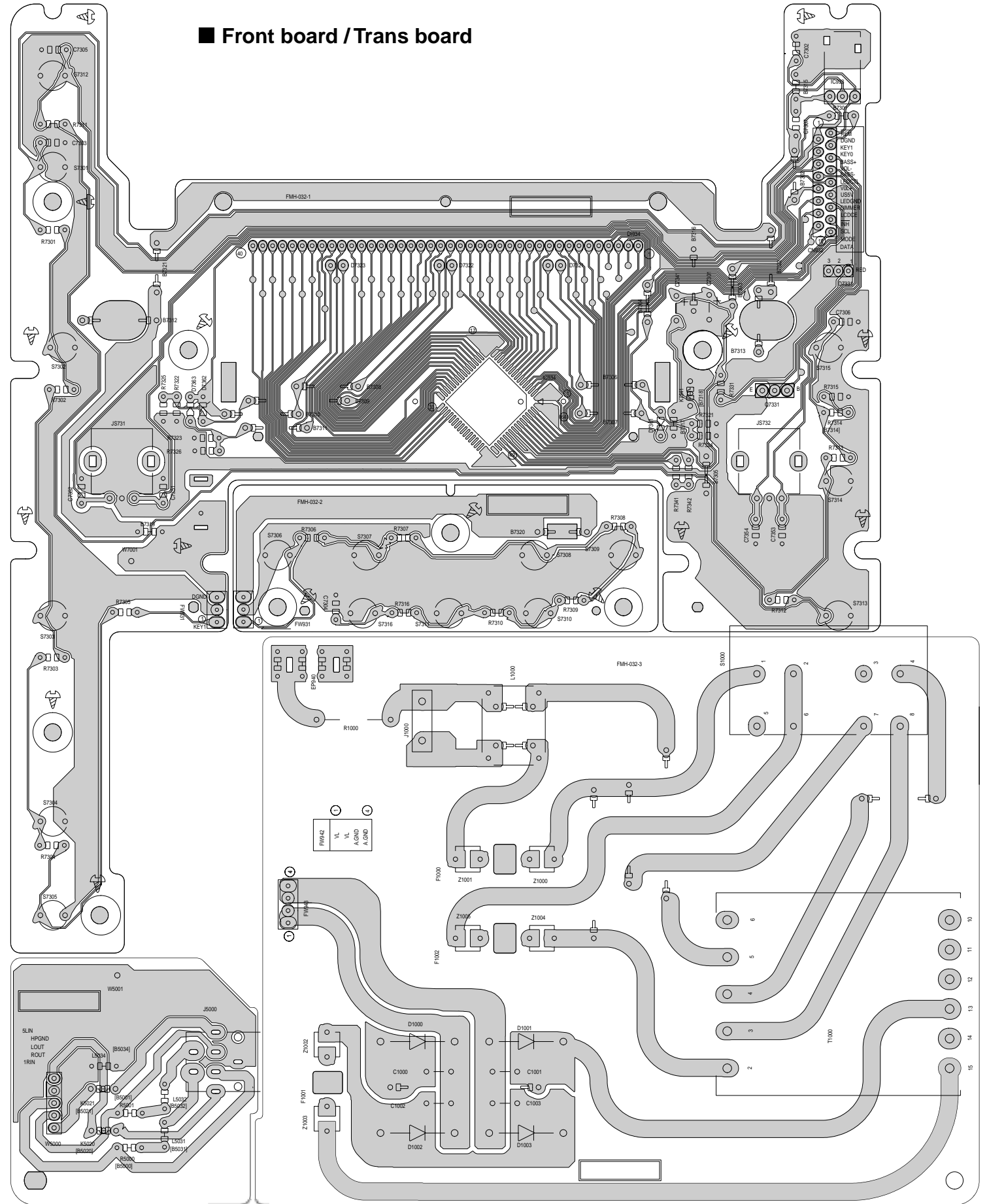
F

G

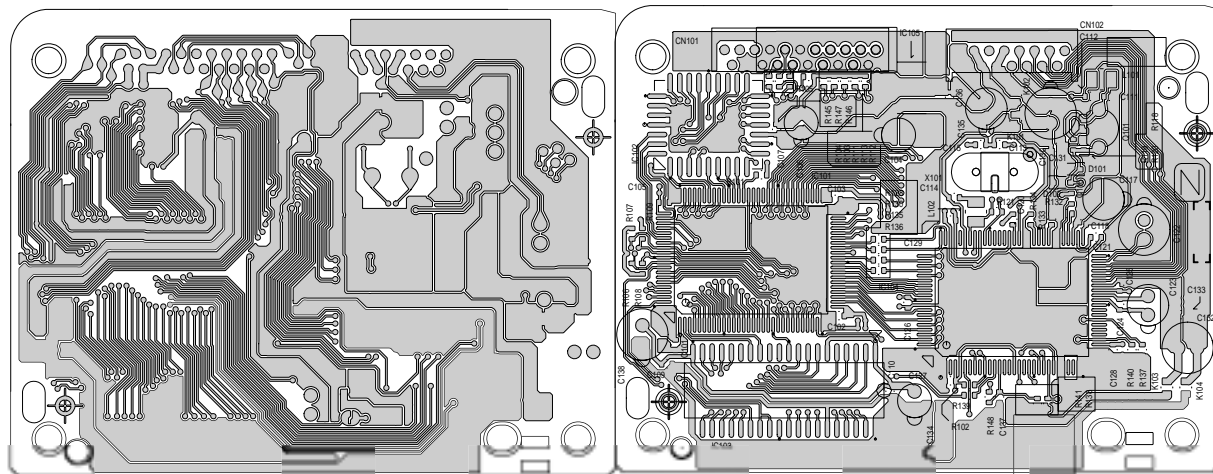
■ Micon board



■ Front board / Trans board



■ VCD board



5

4

3

2

1

A

B

C

2-10

D

E

F

G